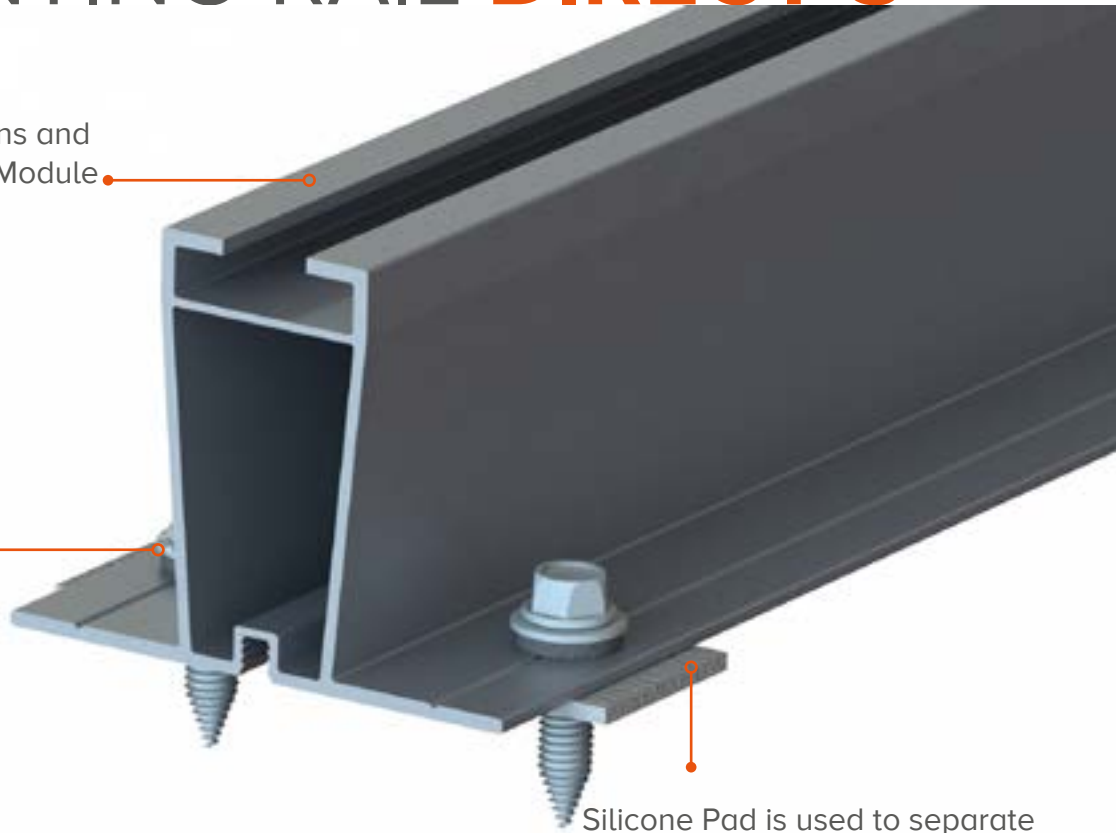


MOUNTING RAIL **DIRECT S**

Perfect for Roof Light Spans and required distances for PV Module Optimisers

1.1kN minimum uplift resistance per screw.



Silicone Pad is used to separate materials and to provide a weatherproof seal.



1.60kg/m²
Weight

0.48mm^{steel} 0.63mm^{aluminium}
Min. profile thickness

1°-45°
Suitable roof pitch

Portrait & landscape
Module orientation

Aluminium, stainless steel & Extruded Silicone
Material

+44 (0) 1451 824 312
info@sunfixings.co.uk
R3 Bourton Industrial Park, Bourton on the Water, Cheltenham, Glos, GL54 2HQ, UK

WWW.SUNFIXINGS.CO.UK
V032022

